

## MEMORANDUM

**TO: RIVANNA WATER & SEWER AUTHORITY  
BOARD OF DIRECTORS**

**FROM: ROBERT C. WICHSER  
DIRECTOR WATER & WASTEWATER**

**REVIEWED BY: THOMAS L. FREDERICK  
EXECUTIVE DIRECTOR**

**SUBJECT: OPERATIONS REPORT FOR JANUARY 2008**

**DATE: FEBRUARY 25, 2008**

### WATER OPERATIONS:

Average daily/monthly total water send-out for the month of January 2008 is as follows:

<i>Water Purification Plant</i>	<i>MGD/MG for Month</i>
<b>Observatory</b>	0.3 / 8.8
<b>South Rivanna</b>	8.1 / 250.9
<b>North Rivanna</b>	0.26 / 8.1
<i>Urban Total</i>	8.7 / 267.8
<b>Crozet</b>	0.36 / 11.1
<b>Scottsville</b>	0.07 / 2.2

All RWSA water production facilities remained in 100% compliance with the Safe Drinking Water Act during the month of January.

### Status of Reservoirs (As of February 15th):

- Ragged Mountain Reservoir is – 1.1 feet below normal pool level and continues to slowly fill.
- Beaver Creek Reservoir is full.
- Sugar Hollow Reservoir is full.
- Totier Creek Reservoir is full.
- South Rivanna Reservoir is full.

**WASTEWATER OPERATIONS:**

Performance of the WWTPs was as follows for January 2008 versus respective permit limits:

<i>WWTP</i>	<i>AVE. DAILY FLOW (MGD)</i>	<i>AVE. BOD (ppm)</i>	<i>PERMIT (ppm)</i>	<i>AVE. TSS (ppm)</i>	<i>PERMIT (ppm)</i>
<b>Moores Creek</b>	7.7	2.4	11	7	22
<b>Camelot</b>	0.12	17	30	18	30
<b>Glenmore</b>	0.109	<5	15	5	30
<b>Scottsville</b>	0.053	NR	30	NR	30
<b>Stone Rob</b>	0.003	NR	30	NR	30

NR- Not Required

- All RWSA wastewater facilities were in regulatory compliance during the month of January;
- There were no odor complaints related to the Crozet Pump Station Number 1 during this current reporting period.

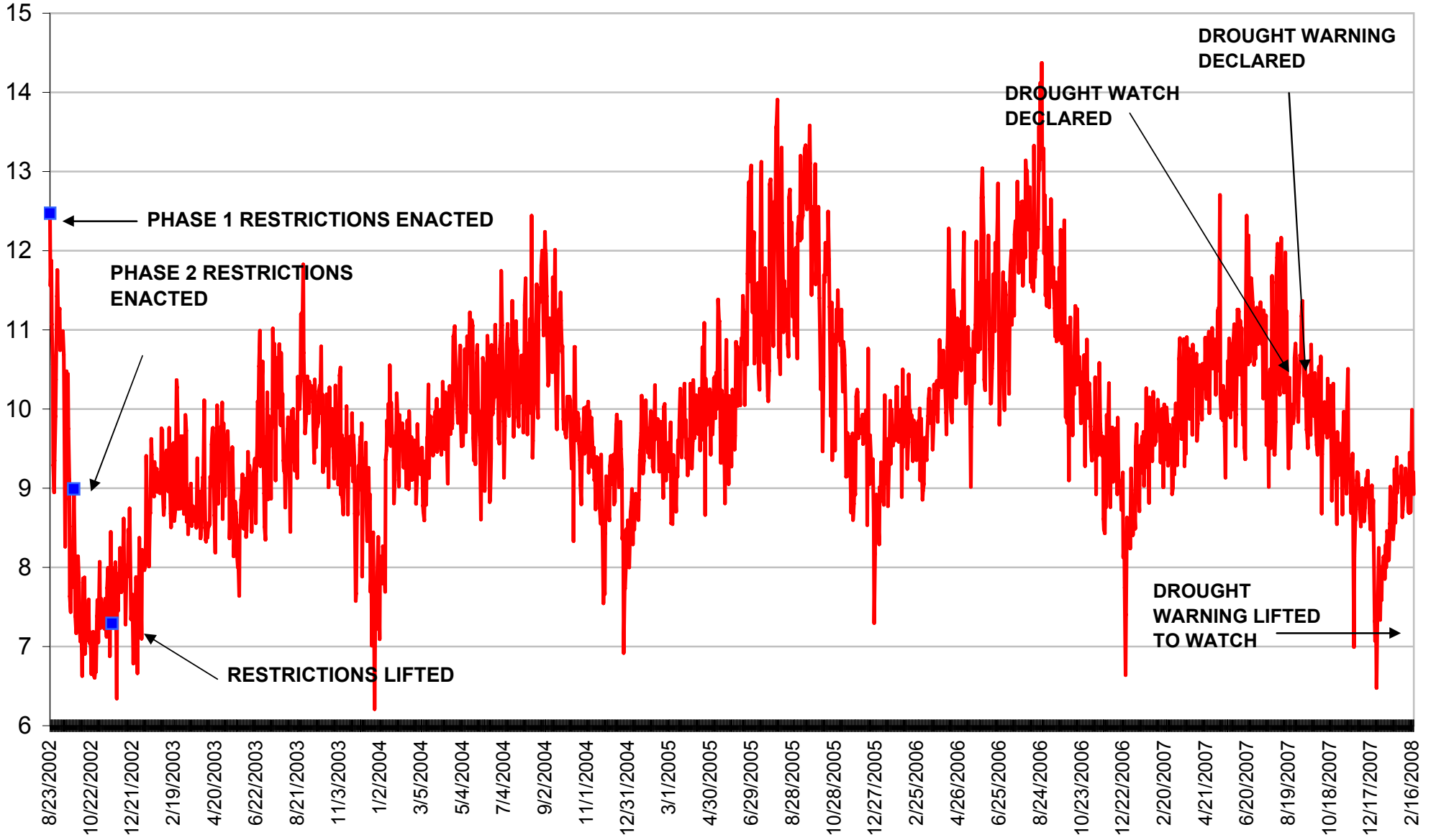
Additionally, the attached graphs are for your review and information. If you have any additional questions, please do not hesitate in contacting me at: 977-2970, Ext: 155.

cc: D. Golladay  
C. Lang

Attachments

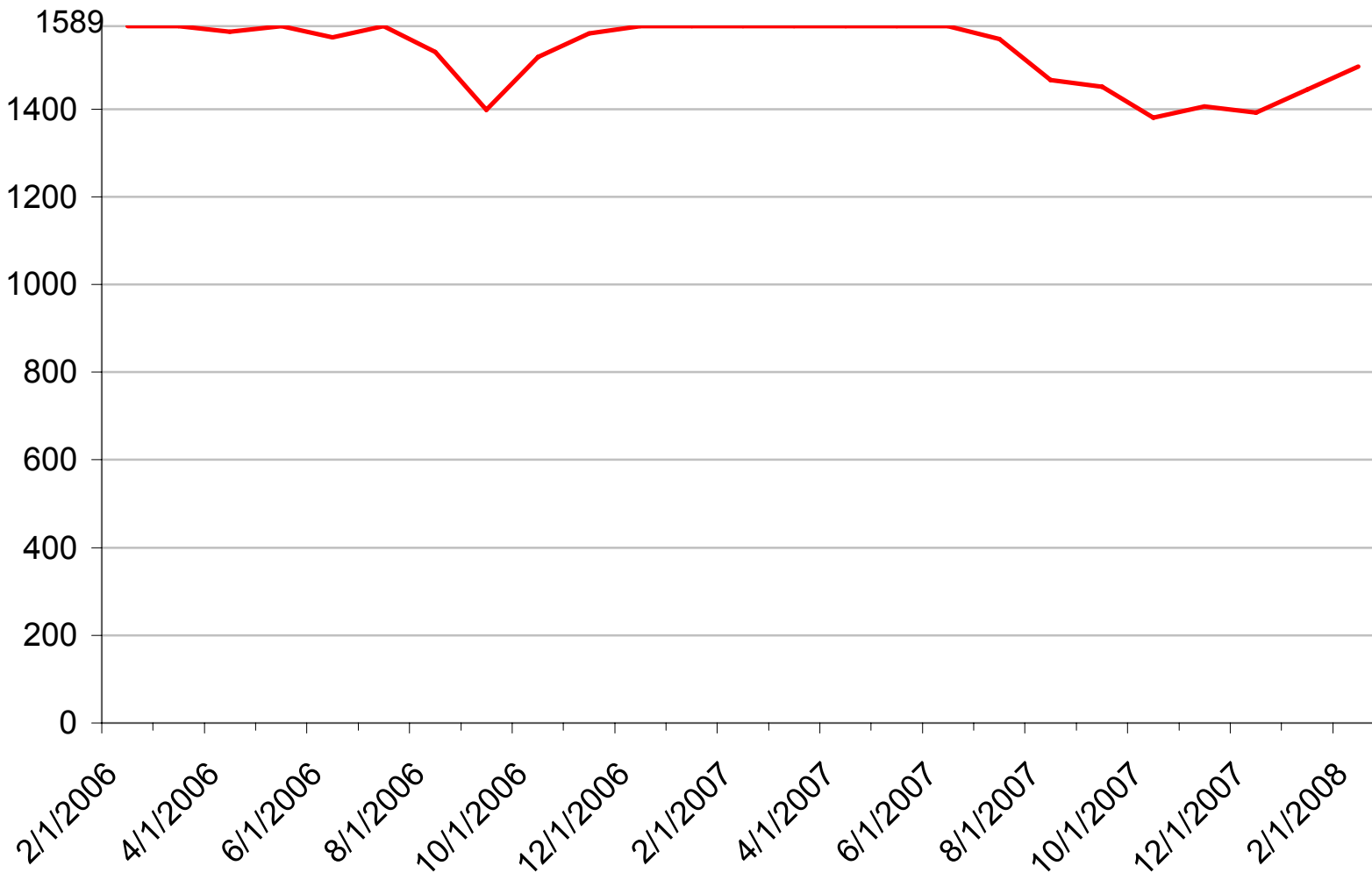
# Daily Water Consumption

Million Gallons



# Urban Raw Water Storage\*

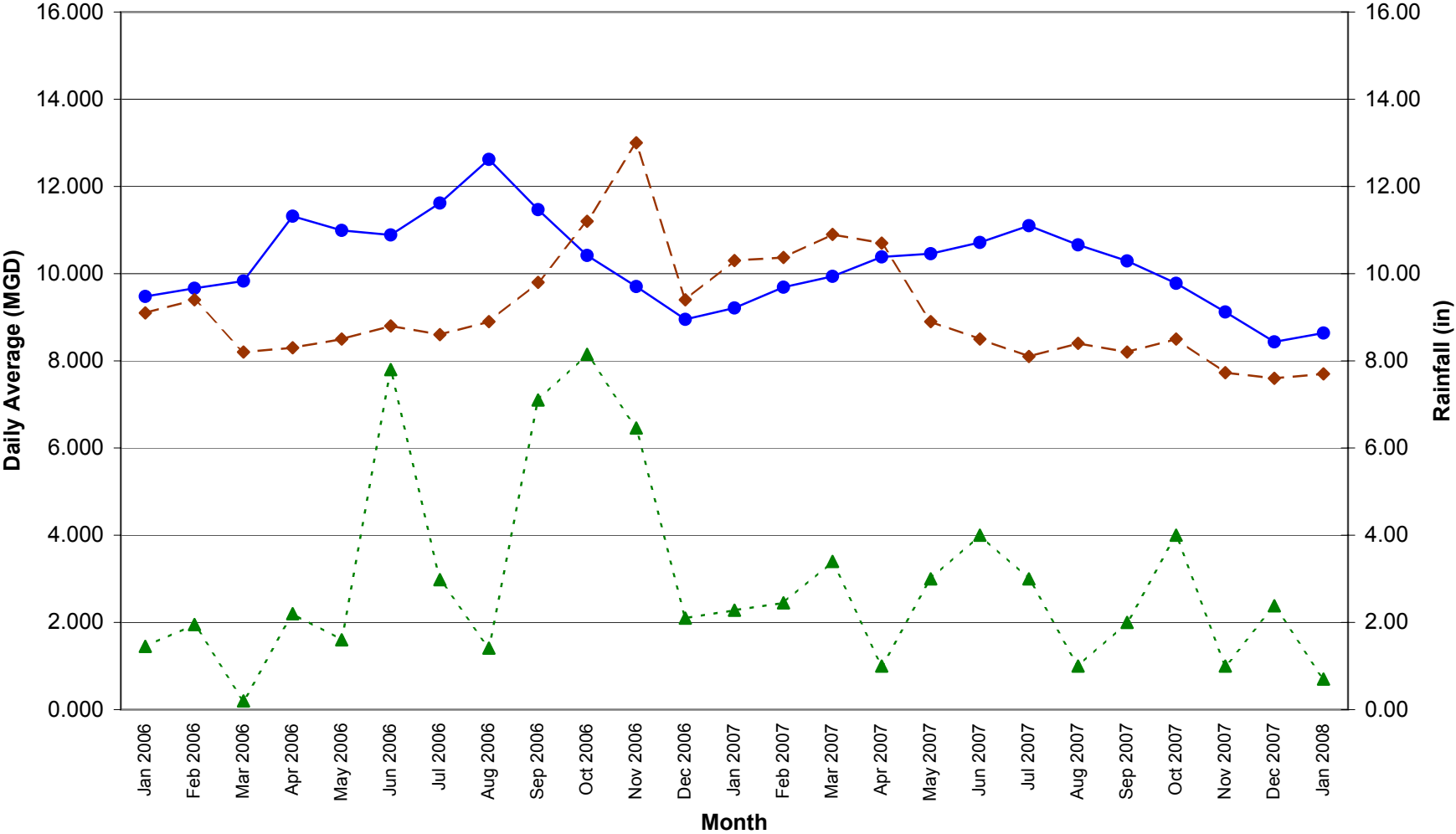
Million Gallons



\* Includes the South Fork Rivanna, Sugar Hollow, and Ragged Mtn Reservoirs.

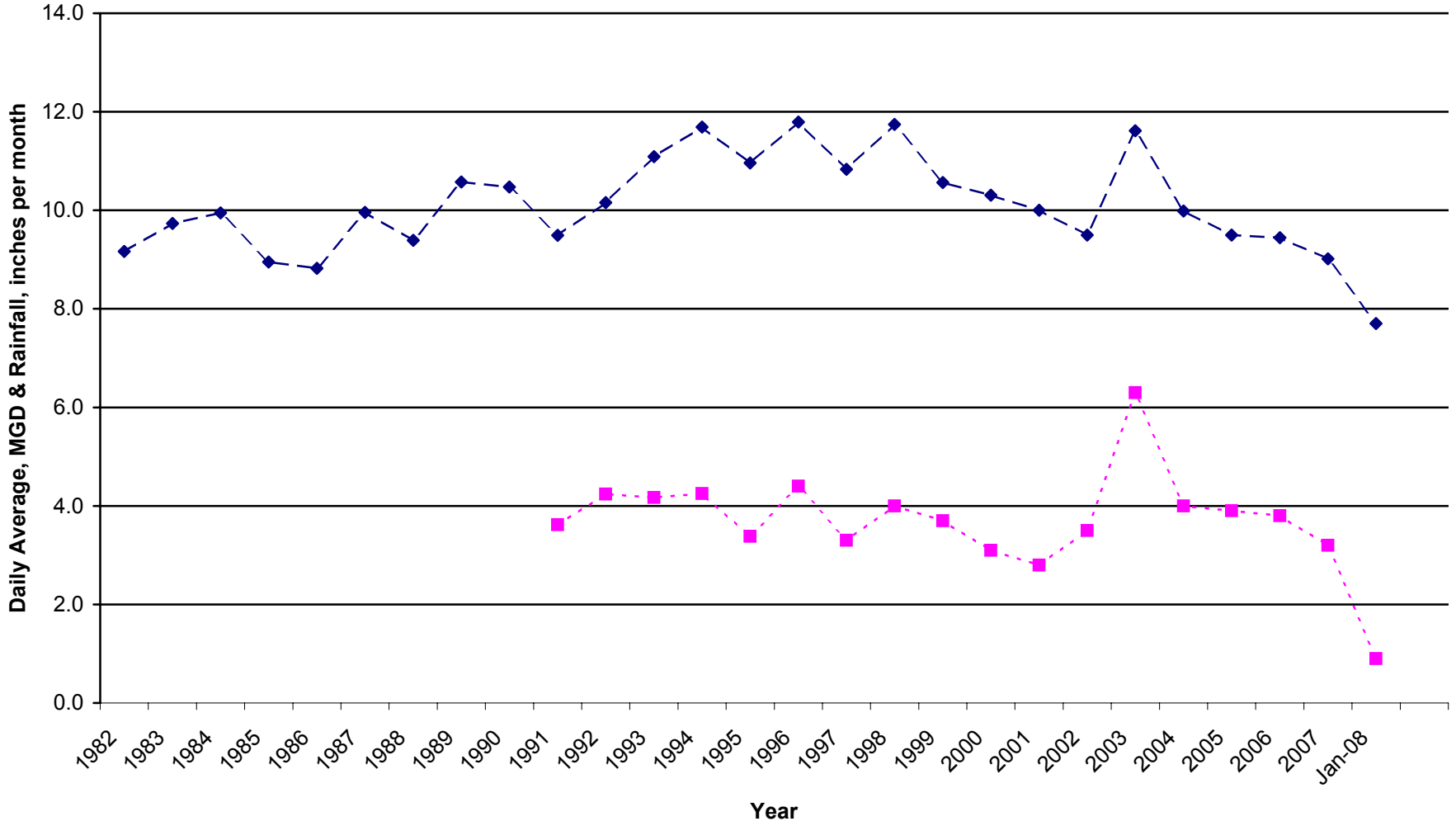
Date

### Urban Monthly Production

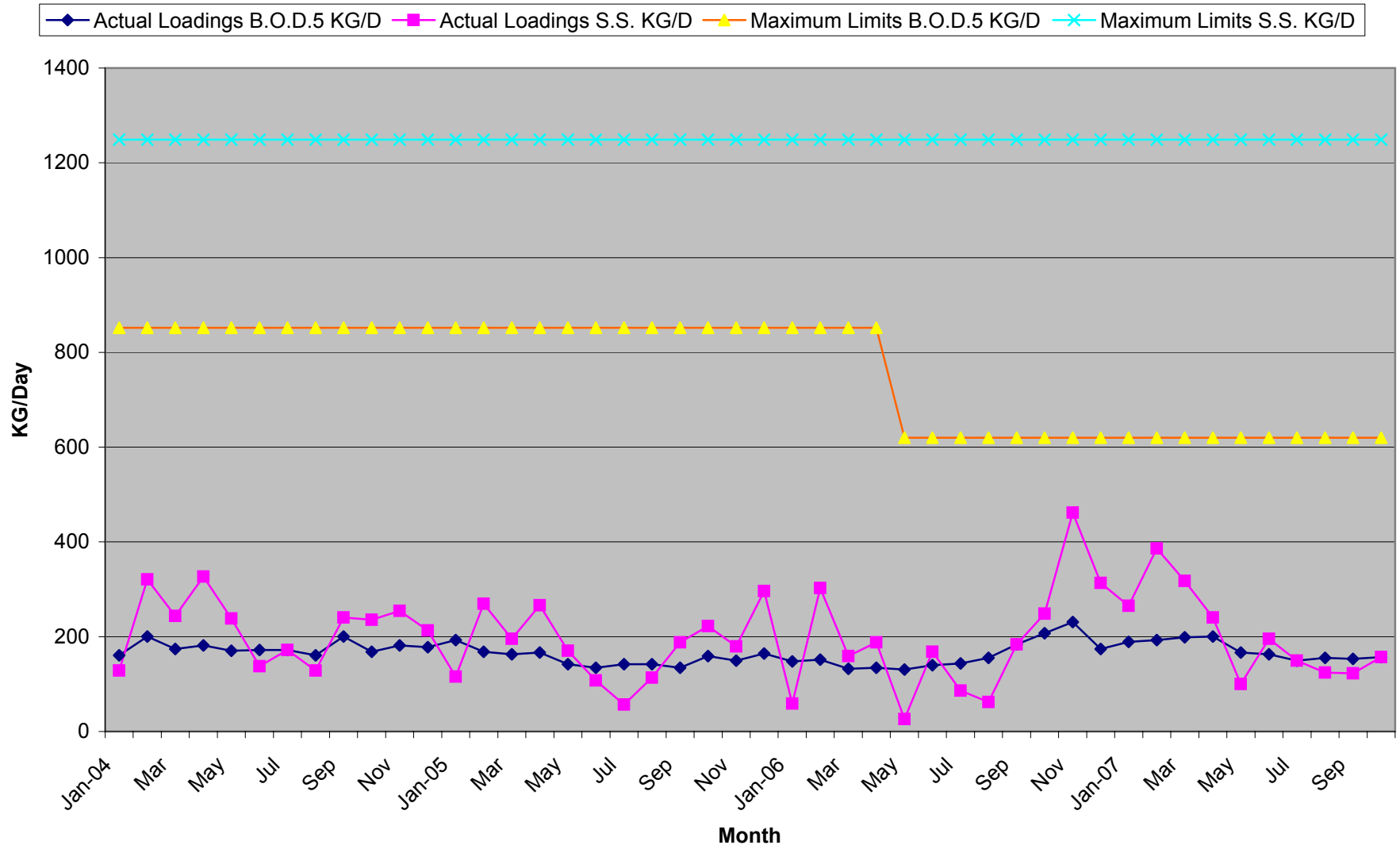


### UWW Annual Flows & Rainfall Data

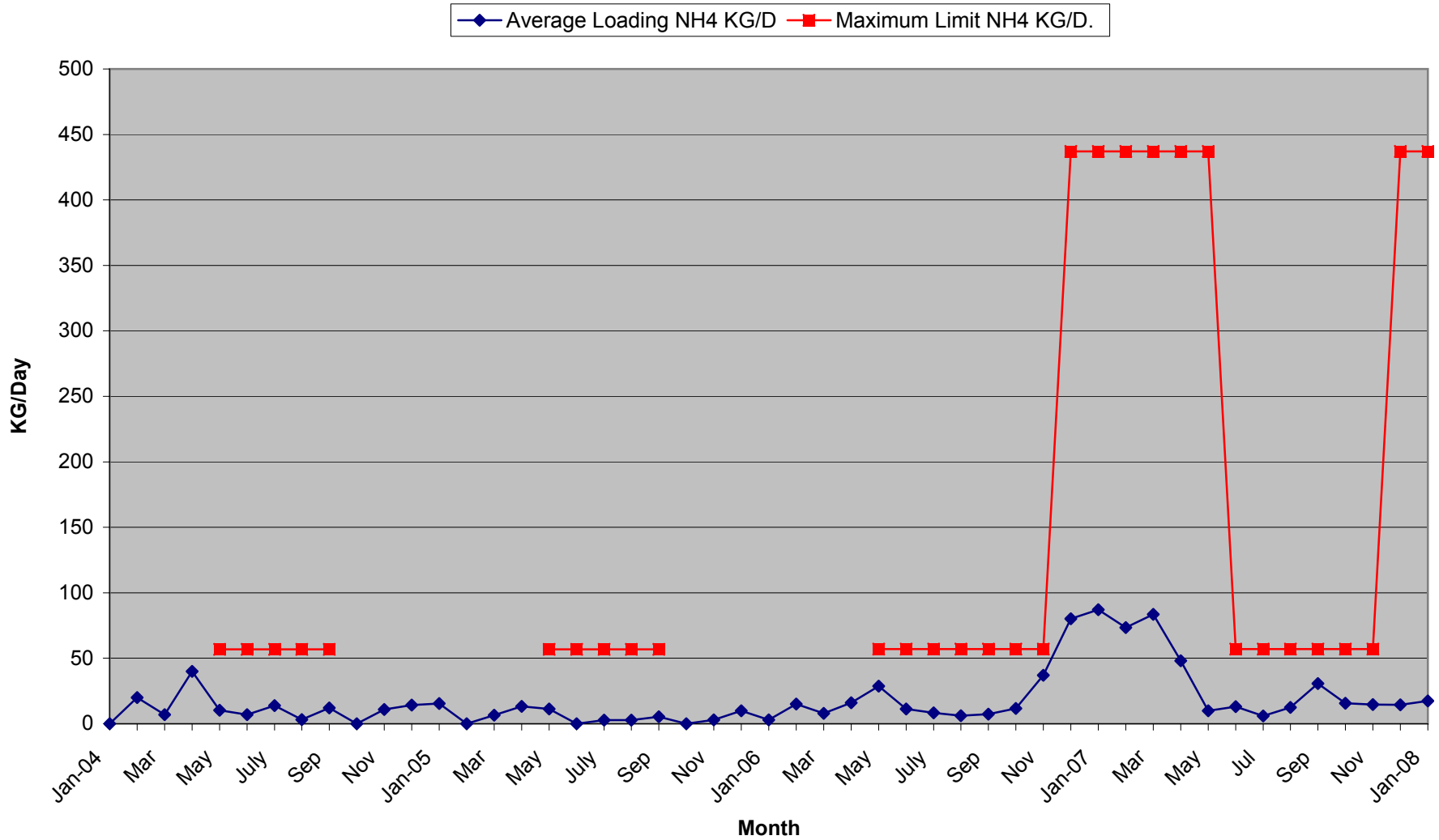
—◆— MGD      - -■- - Rainfall, Average inches per Month measured at Moores Creek WWTP



### Moores Creek AWT Plant To Receiving Stream



## Moores Creek AWT Plant To Receiving Stream



Note: NH<sub>4</sub> limits shown reflect changes from the renewal of the facility's VPDES Permit on May 1, 2006.