



MEMORANDUM

TO: The Commonwealth Transportation Board

THROUGH: Thelma Drake
Agency Director

FROM: Kevin Page
Chief of Rail Transportation

DATE: May 19, 2010

SUBJECT: Monthly Amtrak Performance Report

DRPT is pleased to present the monthly performance report for Amtrak service in Virginia, summarizing March 2010 performance data. This monthly report provides a snapshot of current performance and recent trends. DRPT continues to work with Amtrak to refine data and to ensure that this monthly report is comprehensive.

The following key facts are based on March 2010 results and a year-over-year comparison of trends for March 2010 and March 2009.

Key Facts

- Statewide year over year comparisons:
 - Virginia statewide Amtrak ridership for March 2010 increased 28 percent as compared to March 2009, to 101,806.
 - Statewide on-time performance for all Amtrak trains in Virginia decreased 5.1 percent to 52.4 percent in March 2010 as compared to March 2009.
 - The Northern Virginia district accounts for the majority of Amtrak ridership at 38.6 percent, and the district with the greatest increase in ridership for March 2010 as compared to March 2009 is the Lynchburg district at 117 percent or 3,049 additional passengers.
 - March 2010 included one more weekday and one fewer weekend day than March 2009.

- Statewide station comparisons:
 - Top five Virginia stations by total number of passengers in March 2010:

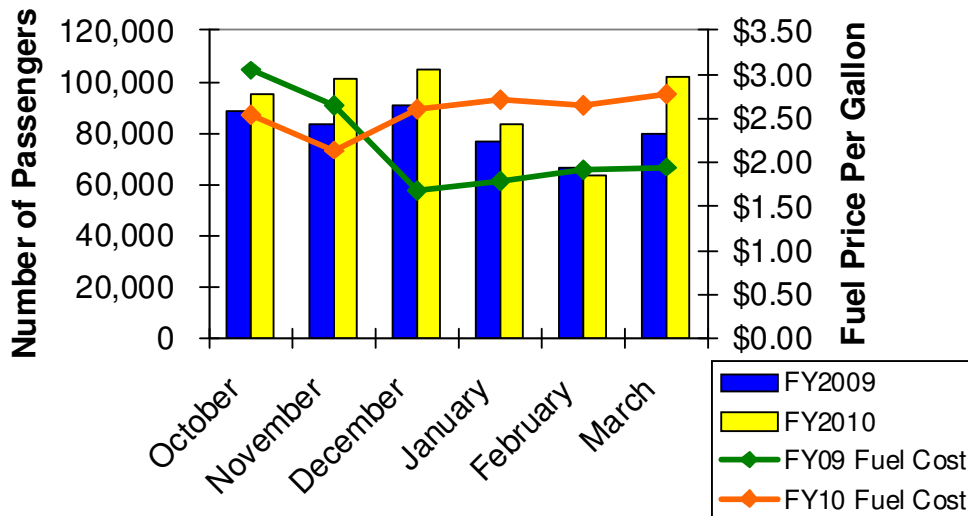
1. Lorton	24,570
2. Staples Mill	23,362
3. Alexandria	11,439
4. Newport News	9,397
5. Charlottesville	8,737

 - Top five Virginia stations by percentage of passenger growth in March 2010 as compared to March 2009:

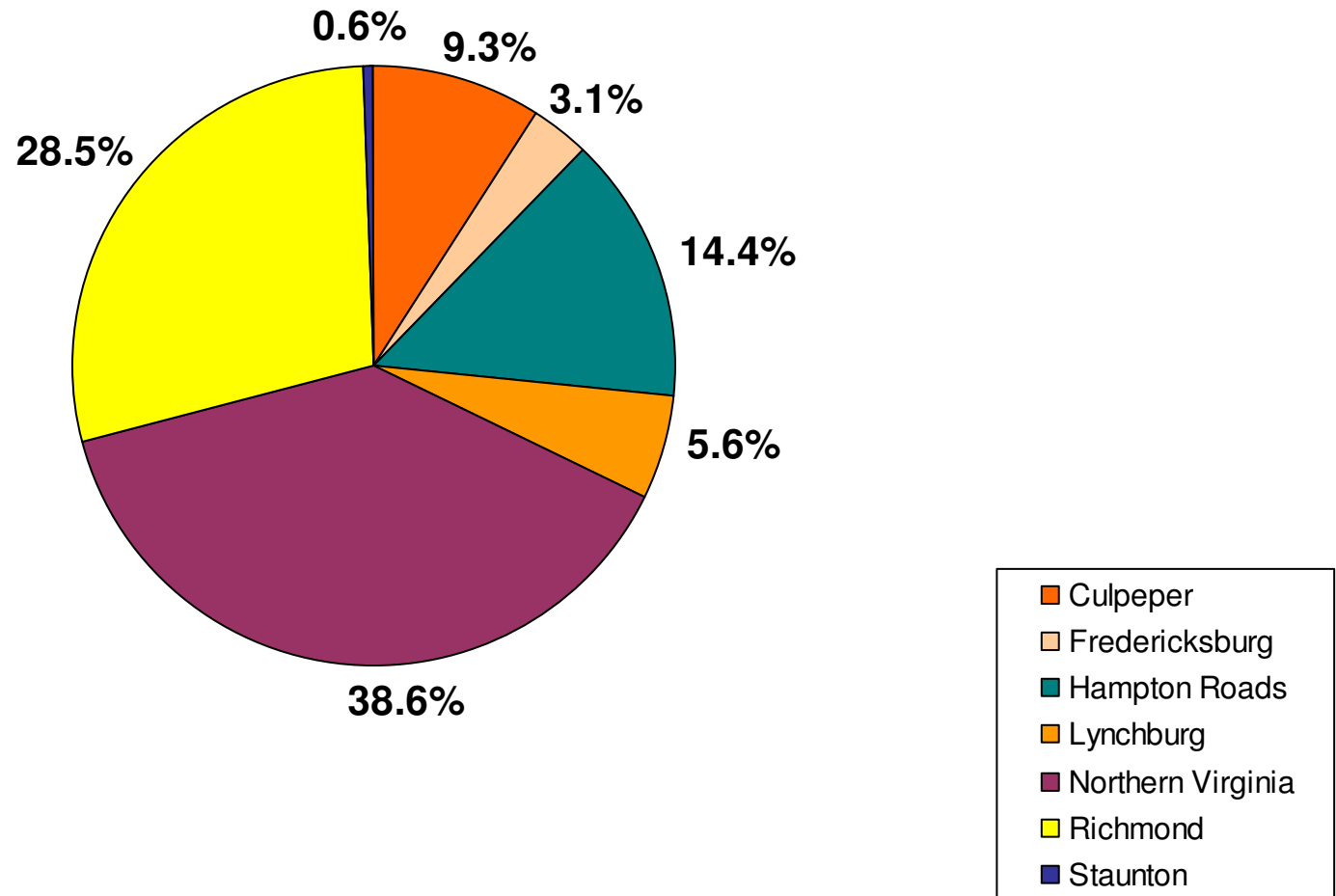
1. Lynchburg	140%
2. Manassas	100%
3. Culpeper	90%

4. Charlottesville 68%
 5. Alexandria 38%
- Virginia-sponsored Amtrak service¹:
 - Lynchburg route service began October 1, 2009
 - Total Lynchburg route ridership credited to Virginia in March 2010 was 11,365, exceeding the monthly target of 4,340 by 161.9 percent.
 - Total Lynchburg route revenue credited to Virginia in March 2010 was \$563,400.62 exceeding the monthly target of \$219,139 by 157.1 percent.
 - The 79.3 percent on-time performance for the Lynchburg route exceeded the statewide average of 52.4 percent in March 2010.
 - Top five bi-directional city pairs for the new Lynchburg route in March 2010:
 1. Charlottesville—New York 1,599
 2. Lynchburg—New York 1,009
 3. Charlottesville—Washington, D.C. 1,844
 4. Lynchburg— Washington, D.C. 1,456
 5. Charlottesville—Philadelphia 452

FY2010 Amtrak Ridership and Fuel Cost Comparison

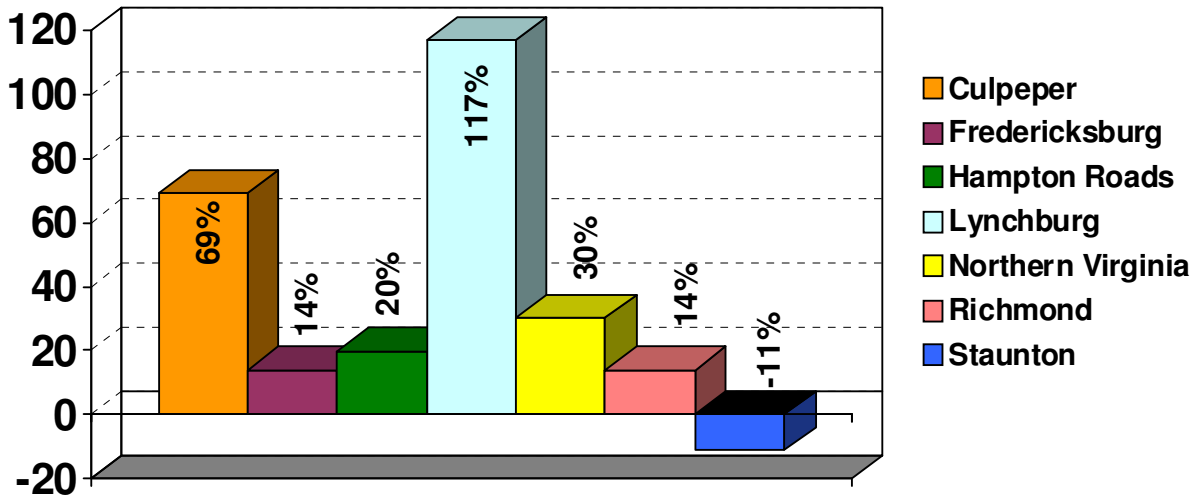


March 2010 Amtrak Ridership by District



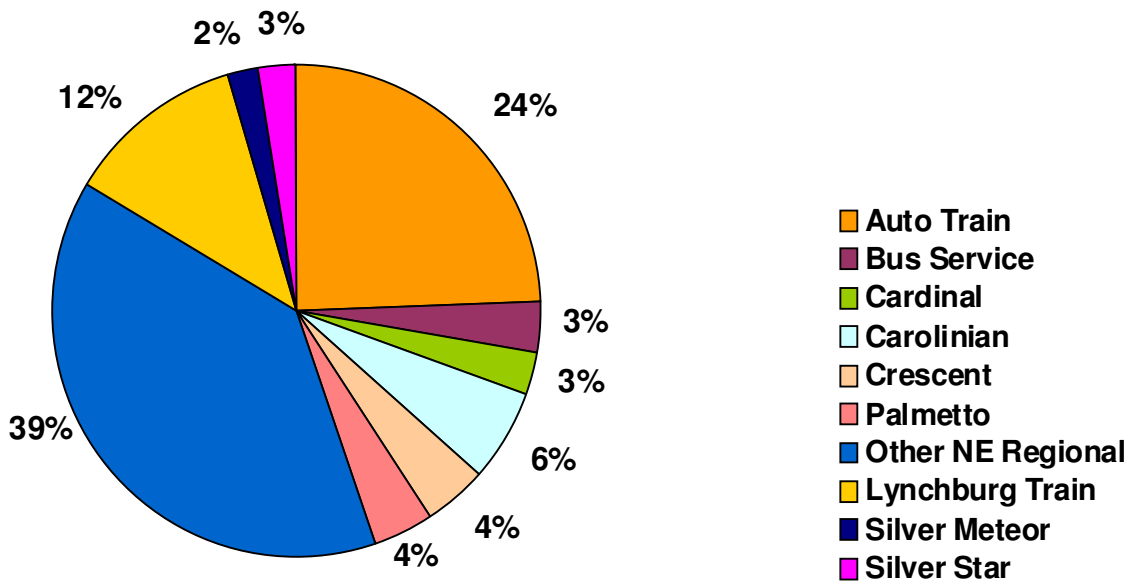
The Salem and Bristol districts are excluded because they currently do not have Amtrak service. Percentages may not add to 100 due to rounding.

Percentage Ridership Change By District March 2009 vs. March 2010



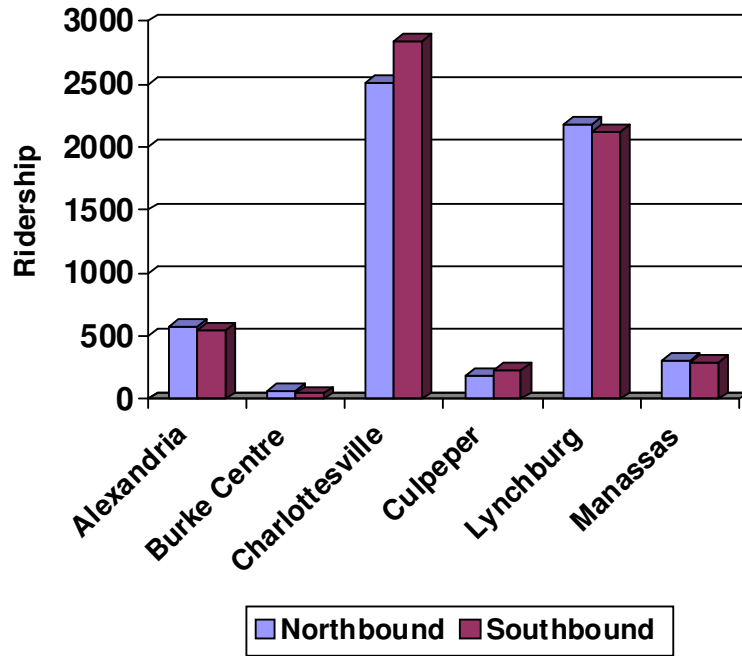
Statewide Amtrak ridership increased 28 percent

March 2010 Statewide Amtrak Ridership By Service

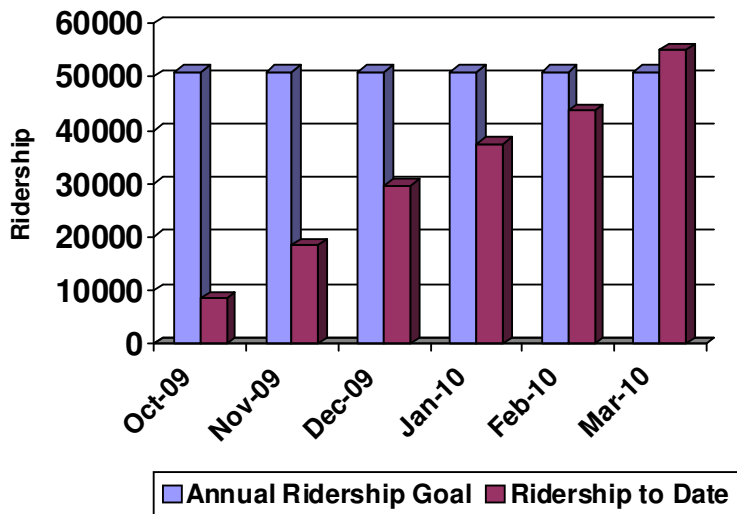


Total I-95 corridor: 81%, Total I-81/Route 29 corridor: 19%

March 2010 Ridership by Direction New Lynchburg Service

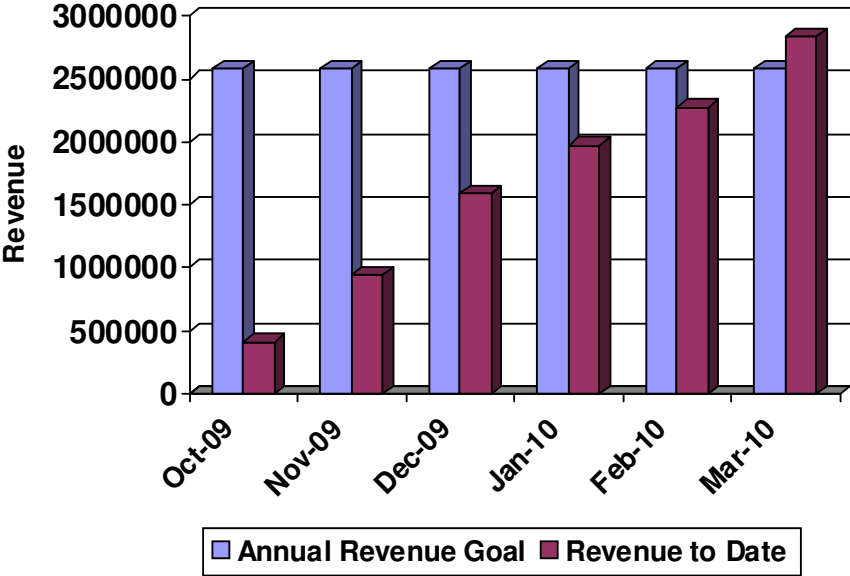


New Lynchburg Route Progress Toward Annual Ridership Goal



Annual Ridership Goal: 51,000
Ridership to Date: 55,025

New Lynchburg Route Progress Toward Annual Revenue Goal



Annual Revenue Goal: \$2,580,000
Ridership to Date: \$2,839,448

March 2010 Amtrak Virginia Performance Report

Transportation District	Total Passengers March 2010	Total Passengers March 2009	Percent Change	Fiscal YTD 2010 (July 2009 - March 2010)	Fiscal YTD 2009 (July 2008 - March 2009)	Percent Change
Culpeper District						
Charlottesville (CVS)	8,737	5,210	68%	58,895	44,074	34%
Culpeper (CLP)	685	361	90%	5,115	3,649	40%
Culpeper District Total	9,422	5,571	69%	64,010	47,723	34%
Fredericksburg District						
Fredericksburg (FGB)	3,137	2,763	14%	31,420	30,266	4%
Fredericksburg District Total	3,137	2,763	14%	31,420	30,266	4%
Hampton Roads District						
Newport News (NPN)	9,397	7,763	21%	97,652	96,034	2%
Norfolk Bus Stop (NFK)	908	700	30%	8,739	8,209	6%
Virginia Beach Bus Stop (VAB)	502	403	25%	5,649	5,787	-2%
Williamsburg (WBG)	3,840	3,321	16%	35,057	36,353	-4%
Hampton Roads District Total	14,647	12,187	20%	147,097	146,383	0%
Lynchburg District						
Danville (DAN)	600	503	19%	6,466	4,426	46%
Lynchburg (LYH)	5,061	2,109	140%	29,258	17,367	68%
Lynchburg District Total	5,661	2,612	117%	35,724	21,793	64%
Northern Virginia District						
Alexandria (ALX)	11,439	8,285	38%	95,655	87,826	9%
Burke Centre (BCV) ²	108	n/a	n/a	180	n/a	n/a
Franconia-Springfield (FRS)	190	202	-6%	1,888	2,094	-10%
Lorton (LOR)	24,570	19,683	25%	181,077	170,614	6%
Manassas (MSS)	1,227	613	100%	8,763	6,594	33%
Quantico (QAN)	1,204	913	32%	11,348	10,767	5%
Woodbridge (WDB)	513	420	22%	4,831	4,846	0%
Northern Virginia District Total	39,251	30,116	30%	303,742	282,741	7%
Richmond District						
Ashland (ASD)	1,427	1,154	24%	13,250	11,998	10%
Main Street (RVM)	2,264	1,635	38%	19,536	17,721	10%
Petersburg (PTB)	1,979	1,634	21%	16,788	15,284	10%
Staples Mill (RVR)	23,362	20,984	11%	189,284	187,389	1%
Richmond District Total	29,032	25,407	14%	238,858	232,392	3%

Transportation District	Total Passengers March 2010	Total Passengers March 2009	Percent Change	Fiscal YTD 2010 (July 2009 - March 2010)	Fiscal YTD 2009 (July 2008 - March 2009)	Percent Change
Staunton District						
Clifton Forge (CLF)	202	208	-3%	2,484	2,948	-16%
Staunton (STA)	454	527	-14%	4,281	4,473	-4%
Staunton District Total	656	735	-11%	6,765	7,421	-9%
TOTAL STATEWIDE PASSENGERS	101,806	79,391	28%	827,616	768,719	8%
RIDERSHIP BY SERVICE³						
	Total Passengers March 2010	Total Passengers March 2009	Percent Change	Fiscal YTD 2010 (July 2009 - March 2010)	Fiscal YTD 2009 (July 2008 - March 2009)	Percent Change
Auto Train	24,570	19,683	25%	181,077	170,614	6%
Bus Service	3,445	2,875	20%	34,803	35,569	-2%
Cardinal	2,693	2,762	-2%	24,102	25,964	-7%
Carolinian	6,074	2,766	120%	51,106	47,071	9%
Crescent	4,181	7,456	-44%	41,452	60,683	-32%
New Lynchburg Service	11,919	n/a	n/a	58,133	n/a	n/a
Other Northeast Regional	38,969	32,585	20%	363,122	357,496	2%
Palmetto	3,974	6,328	-37%	30,285	30,004	1%
Silver Meteor	1,999	2,058	-3%	16,806	16,606	1%
Silver Star	2,544	2,878	-12%	23,707	23,735	0%
TOTAL RIDERSHIP BY SERVICE	100,368	79,391	26%	824,593	767,742	7%
ON-TIME PERFORMANCE⁴						
	March 2010	March 2009	Percent Change	Fiscal YTD 2010 (July 2009 - March 2010)	Fiscal YTD 2009 (July 2008 - March 2009)	Percent Change
Statewide	52.4%	55.2%	-5.1%	58.1%	56.6%	2.7%
New Lynchburg Service	79.3%	n/a	n/a	80.4%	n/a	n/a

¹ Passenger data does not directly correspond to Virginia ridership credit on state-sponsored trains.

² A new Amtrak stop was added for the new Lynchburg route in January 2010 at Burke Centre in Fairfax County.

³ By service data accounts for activity at Virginia stations. This data does not account for other Amtrak trains operated in addition to regularly scheduled Virginia service.

⁴ Statewide fiscal year-to-date on-time performance is calculated as an average of the year-to-date data. On-time performance for the new Lynchburg service is available from the month the service started (October 2009) and forward.